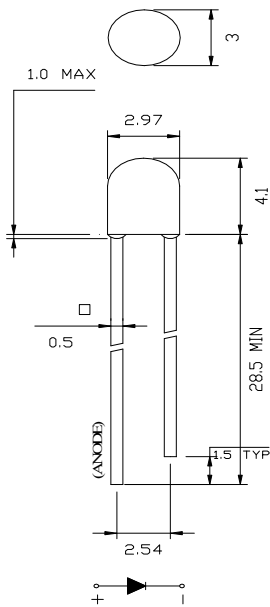


3MM SMALL SERIES LED

ABSOLUTE MAXIMUM RATINGS

PARAMETER	SYMBOL	RANGE
Peak Forward Current	I _{fp}	100 mA
Reverse Voltage	V _r	5V
Operating Temperature Range	T _{op}	-40°C to +80°C
Storage Temperature Range	T _{sg}	-48°C to +80°C
Lead Soldering Temperature	T _{sol}	268°C for 5 seconds

TEST CONDITIONS			
PARAMETER	SYMBOL	UNIT	TEST CONDITION
Reverse Voltage	V _r	V	I _r =10μA
Reverse Current	I _r	μA	V _r =5V
Forward voltage	V _f	mV	I _f =20mA
Luminous Intensity	I _v	mcd	I _f =20mA



SL	PART NO	SIZE	SHAPE	COLOUR	LENS TYPE	INTENSITY (I _v in mcd)	WAVE LENGTH (nm / ct)	FORWARD VOLTAGE (V)	VIEWING ANGLE IN DEGREES
1	LLR 0302U	2.8mm	ROUND	WHITE	WATER CLEAR	1500 - 2500	2200 - 7500K	3.0 - 3.5V	140
2	LLR 0302UH	2.8mm	ROUND	WHITE	WATER CLEAR	2500 - 4000	2200 - 7500K	3.0 - 3.5V	140
3	LLR 1302	2.8mm	ROUND	BLUE	WATER CLEAR	1500 - 2000	450 - 470nm	3.0 - 3.5V	140
4	LLR 2302	2.8mm	ROUND	GREEN	WATER CLEAR	300 - 500	570 - 575nm	1.8 - 2.4V	140
5	LLR 2302UPG	2.8mm	ROUND	GREEN	WATER CLEAR	4000 - 4500	525 - 530nm	3.0 - 3.5V	140
6	LLR 3302	2.8mm	ROUND	YELLOW	WATER CLEAR	600 - 800	585 - 595nm	1.8 - 2.4V	140
7	LLR 4302	2.8mm	ROUND	RED	WATER CLEAR	600 - 800	620 - 630nm	1.8 - 2.4V	140
8	LLR 7302	2.8mm	ROUND	AMBER	WATER CLEAR	1500 - 2500	605 - 610nm	1.8 - 2.4V	140