

3mm SUPER FLUX LED SPECS

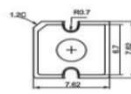
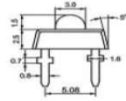
ABSOLUTE MAXIMUM RATINGS

PARAMETER	SYMBOL	RANGE
Peak Forward Current	I <sub>fp</sub>	100 mA
Reverse Voltage	V <sub>r</sub>	5V
Operating Temperature Range	T <sub>op</sub>	-40°C to +80°C
Storage Temperature Range	T <sub>sg</sub>	-48°C to +80°C
Lead Soldering Temperature	T <sub>sol</sub>	268°C for 5 seconds

TEST CONDITIONS			
PARAMETER	SYMBOL	UNIT	TEST CONDION
Reverse Voltage	V <sub>r</sub>	V	I <sub>r</sub> =10μA
Reverse Current	I <sub>r</sub>	μA	V <sub>r</sub> =5V
Forward voltage	V <sub>f</sub>	mV	I <sub>f</sub> =20mA
Luminous Intensity	I <sub>v</sub>	mcd	I <sub>f</sub> =20mA



UNIT:mm



SL NO	PART NO	SIZE	SHAPE	COLOUR	LENS TYPE	INTENSITY ( I <sub>v</sub> in mcd )	WAVE LENGTH (nm / ct)	FORWARD VOLTAGE (V)	VIEWING ANGLE IN DEGREES
1	LLP 031U	3mm	PIRANHA	WHITE	WATER CLEAR	4000 - 6000	2200 - 7500K	3.0 - 3.5V	80/120
2	LLP 031UH	3mm	PIRANHA	WHITE	WATER CLEAR	6000 - 10000	2200 - 7500K	3.0 - 3.5V	80/120
3	LLP 131U	3mm	PIRANHA	BLUE	WATER CLEAR	2000 - 5000	450 - 470	3.0 - 3.5V	80/120
4	LLP 131UH	3mm	PIRANHA	BLUE	WATER CLEAR	5000 - 7000	450 - 470	3.0 - 3.5V	80/120
5	LLP 231UHPG	3mm	PIRANHA	GREEN	WATER CLEAR	7000 - 10000	525 - 530	3.0 - 3.5V	80/120
6	LLP 431U	3mm	PIRANHA	RED	WATER CLEAR	2000 - 4000	620 - 630	1.8 - 2.4V	80/120
7	LLP 431UH	3mm	PIRANHA	RED	WATER CLEAR	4000 - 6000	620 - 630	1.8 - 2.4V	80/120
8	LLP 331U	3mm	PIRANHA	YELLOW	WATER CLEAR	2000 - 4000	585 - 595	1.8 - 2.4V	80/120
9	LLP 331UH	3mm	PIRANHA	YELLOW	WATER CLEAR	4000 - 6000	585 - 595	1.8 - 2.4V	80/120
10	LLP 731U	3mm	PIRANHA	YELLOW	WATER CLEAR	2000 - 4000	605 - 610	1.8 - 2.4V	80/120